



# Yacht Harbours of Lithuania

There is only one port on the shallow Lithuanian coast, Klaipėda. Yachts may pass through it into the Curonian Lagoon (Kuršių Marios). It is a real heaven for yachtsmen with spectacular scenery, top-notch resorts, and mouth of the River Nemunas unaffected by industry. Historical sailing-ships with Dutch side centreboards and unique antique rigging still navigate through the Curonian Lagoon. In 2000 the Curonian Lagoon was enlisted into the UNESCO World Heritage list.

The Curonian Lagoon is a bay of the Baltic Sea. The northern part belongs to Lithuania, and the southern part belongs to Russia.

The international waterways marking system is used in the harbour of Klaipėda, Curonian Lagoon, and the River Nemunas. It is recommended that yachts sail along a deep channel on the side of the Curonian Lagoon. Sometimes outward lagoon flow causes steeper waves.

At the Kiaulės Nugara Island (55°39.5' N) there is a high voltage electricity supply line coming from the coast to the Curonian Spit (Kuršių Nerija). The wiring is at the height of 27 m, and on the coast it is only 12 m. Therefore, have the Kiaulės Nugara Island on the East side. Waterways in the Curonian Lagoon are marked by the signs lighted during the dark period. The yellow buoys on the south of Nida mark the state border of Lithuania and Russia. The bottom of the Curonian Lagoon is soft and sandy. There are stones at the approach Ventės Ragas (55°20.4' N 21°11.5' E). Dangerous for yachts shallows are charted on the map.

Starting from Alksnynė (55°38' N) to Pervalka (55°25' N) fishermen put their hoop-nets, which are seen well during the day by regular lines of poles, and less noticeable floating nets with flags at the ends are to the south of Pervalka.

Entrance to the Klaipėda harbour starts at beacon No.1 located at 20°59.760'E and 55°43.857'N. Harbour gates are about 2 nautical miles from the beacon on course 272.5°. The harbour lighthouses are already seen from there: the green lighthouse on the southern pier, the red on the northern one, and internal lighthouse during the dark blinking in 2Is06s mode.

It is dangerous for sailing yachts to enter the harbour when west wind (SW to NW) is strong. Because of wave interference the rip gets stronger just before the harbour gates. When sailing, one has to be ready to change the reach at the harbour gates because just after entering the gates you have to take 30° course to the right.

There are dangerous currents at the gates and its approaches. It is recommended to keep to the centre of the harbour gates, and to engage supplementary engine.

Radiotelephone connections are started on 16 UHF channel, a call sign is "Klaipėda radio-1". Vessel Traffic Service is accessible on 9 UHF channel, a call sign is "Klaipėda radio-5".

Border and customs control is at Vitė border control post at pier No. 26 (on holidays, at pier No. 25), on the northern bank of the River Danė.

A water area on the western side of harbour between Curonian Spit and deep-sea fairway is intended for yachts.

Yachts with draught of 1.7 m can sail in the Curonian Lagoon, yet yachts with a draught up to 2.2 m may reach Nida on the fairway. Detailed information on water level and sailing conditions may be obtained at the Smiltynė yacht club. The fairway starts at the Kiaulės Nugara Island which can be passed only from the western side.

Sailing in the lower reaches of the River Nemunas you may enjoy astounding nature and the old architecture. The old Uostadvaris lighthouse marks the beginning of the Minija-Klaipėda (Vilhelmas) channel.

The village of Minija is an architectural site. The only street in the village is the river, and the means of transport is a boat.

Currently it is not possible to sail along Vilhelmas (Klaipėda) channel. Lankupiai floodgate at the Minija junction does not work, and the passage is closed at the entrance in the Klaipėda harbour and Dreverna.

Along the Atmata and Šyša rivers you may reach Šilutė harbour. At the entrance of Šilutė harbour you should watch for electricity line (at 9 m). Upstream of the River Nemunas you may visit Rusnė, Tilžė, Ragainė and Jurbarkas, castles situated along the River Nemunas, and Kaunas.

The waterway in the River Nemunas (Atmata) is marked. The depth of the waterway from Atmata lighthouse to Jurbarkas is 1.5 m, and from Jurbarkas to Kaunas 1.2 m.

The depth of the waterway in the Minija and Šyša rivers is 1.5 m.

# KLAIPĖDA

Lithuania's third largest city is located on the narrow strait linking the Curonian Lagoon with the Baltic Sea, and is vital to Lithuania's economy as the country's main seaport. As a gateway to a series of breathtakingly beautiful sand dunes and quaint fishing villages, Klaipėda is generally used as a launch pad rather than a final destination. From Klaipėda it's easy to reach the small fishing villages of Nida and Juodkrantė on the Curonian Spit (Kuršių Nerija), or Palanga, a summer resort town to the north.

Archaeological evidence reveals that the Balts at one time densely populated the area. From the 9th century onwards, Vikings from the north perpetually raided these lands. From the 13th century, the site suffered invasions by German feudal lords and the Teutonic Order. After erecting the castle of Memelburg, they used it to control the strait between the mainland and the Curonian Spit. In some years the fast developing town of Memel (as Klaipėda was once known) was granted similar rights to the Hanseatic towns of Dortmund (1254) and Lubeck (1258). In 1923, the Lithuanian government seized control of the Klaipėda region from the French, and the region was soon recognised as a part of Lithuania.

Klaipėda has developed into a modern city, with a peculiar Germanic Old Town.

**Klaipėda TIC**  
Tomo 2, LT-5800 Klaipėda  
Tel. +370 46 412186, http://www.klaipeda.lt/

### PLACES TO VISIT

**The Church of Mary, Queen of Peace**  
Rumšiškės 6a, Klaipėda  
This modern church was built in 1960 with privately raised funds. Once finished in 1962, it was closed by the Soviet authorities and transformed into a concert hall. It is, however, once again used as it was originally intended.

Klaipėda harbour information http://www.spk.lt/

### Sculpture of Annchen von Tharau (Taravos Anikė)

Teatro a., Klaipėda  
This is a statue of a lovely, diffident girl posing in front of the Drama Theatre. It was first erected in 1912, but disappeared during WWII. It was reproduced from black and white photographs, and unveiled in 1989.

**Mažvydas Sculpture Park**  
Between Liepų and Daukanto streets.  
This Lithuanian inscription on a stone in the Mažvydas Sculpture Park reminds people that until 1977 the central cemetery was located here. The graves were levelled by order of the Soviets. Plans to restore its original appearance have been stalled due to lack of funds. It is a pleasant place to stroll in, filled with playful sculptures.

**Memorial to Martynas Mažvydas**  
Lietuvinių a., Klaipėda  
A statue was unveiled in 1997 in memory of Martynas Mažvydas, author of Catechism, the first Lithuanian book published in 1547. The unveiling was one of a series of events marking the 450th anniversary of the publication.

### MUSEUMS

**Maritime Museum, Aquarium & Dolphinarium**  
Smiltynė, Klaipėda, tel. +370 46 490751, +370 46 490740 (museum), +370 46 490750 (dolphinarium), fax +370 46 490750, www.jurumuziejus.lt

**Blacksmith's Museum**  
Šaltkalvių 2, Klaipėda, tel. +370 46 410526

**Museum of Clocks and Watches**  
Liepų 12, Klaipėda, tel. +370 46 410414, +370 46 41 0413

**History Museum of Lithuania Minor**  
Didžioji Vandens 6, Klaipėda, tel. +370 46 410524, +370 46 410523

**Picture Gallery**  
Liepų 33, Klaipėda, tel. +370 46 410412

**Nature Museum**  
Smiltynės 10, tel. +370 46 391177

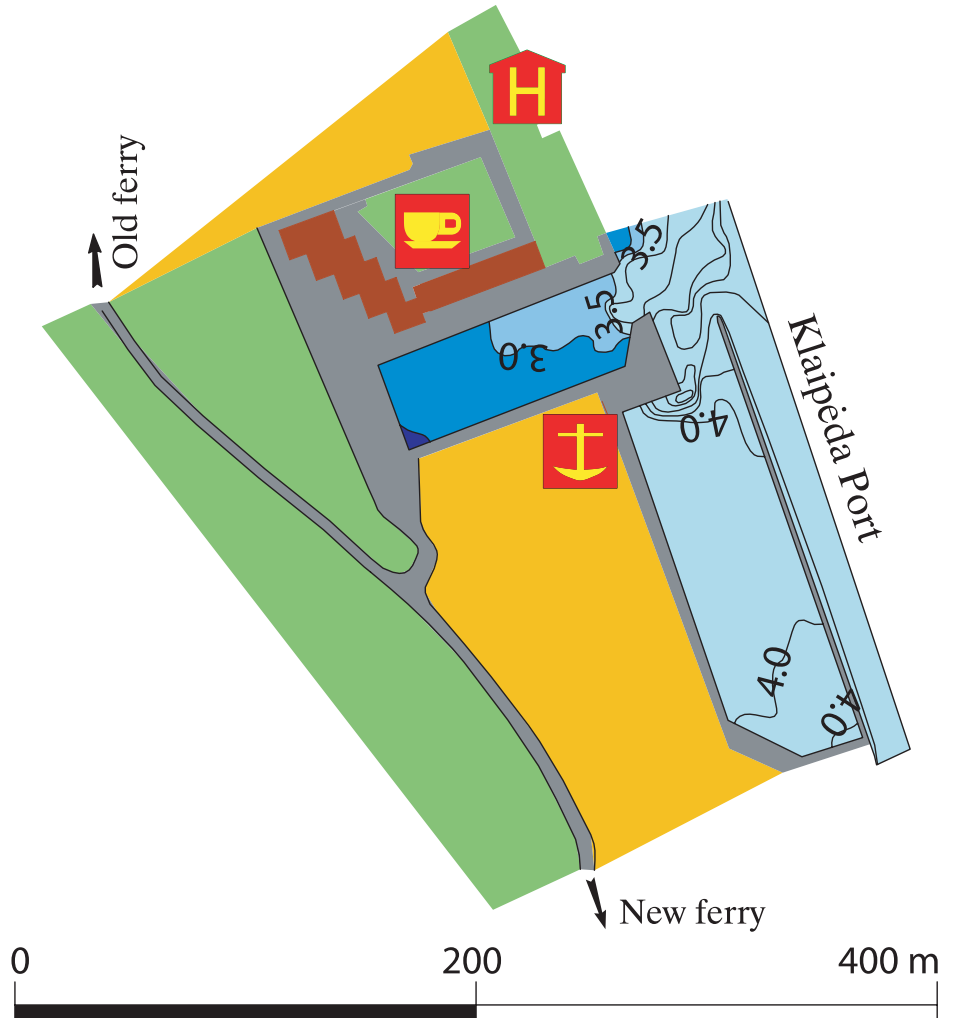
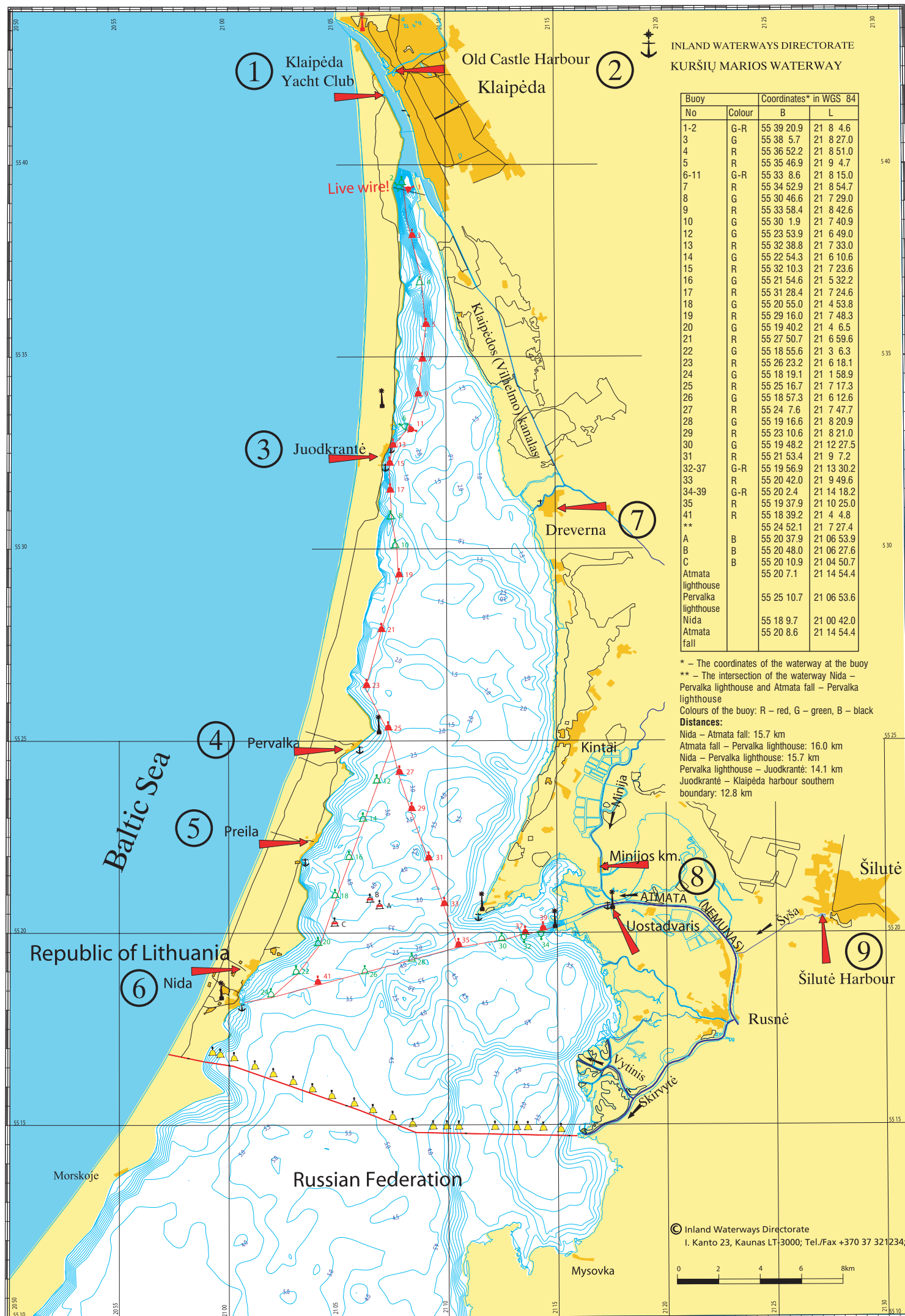
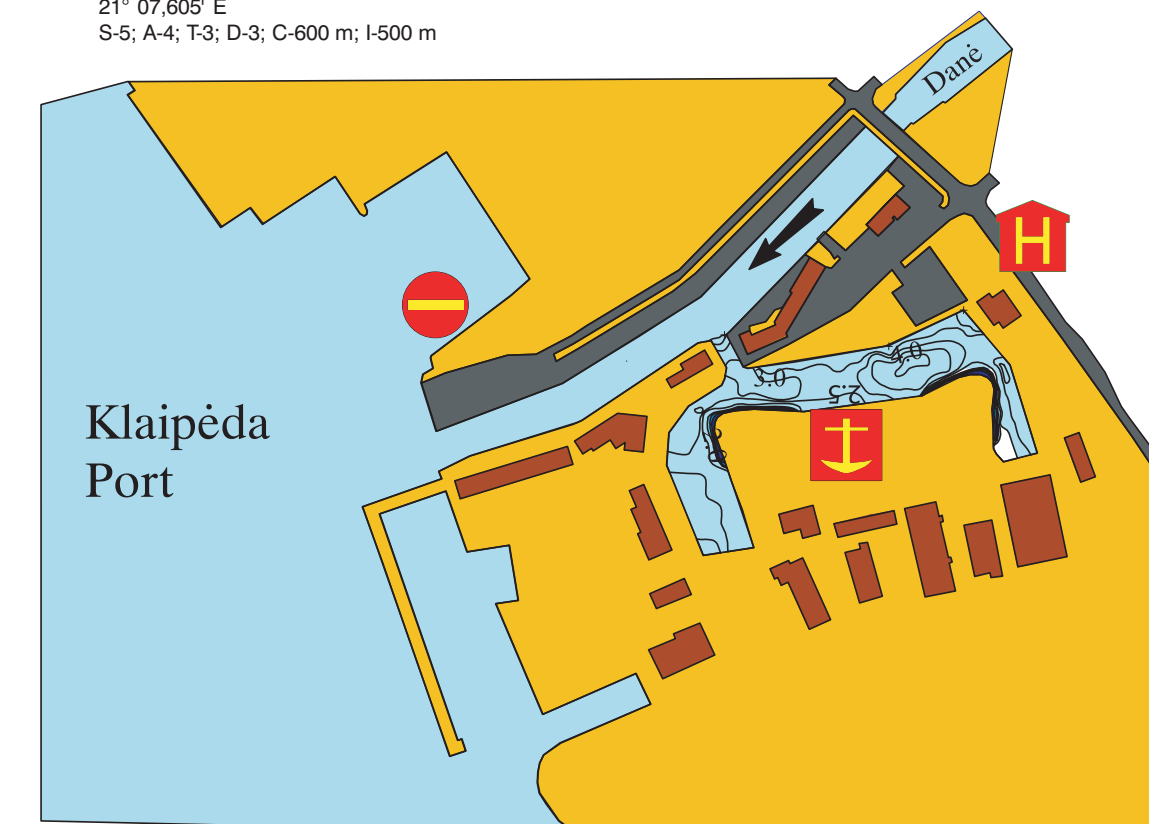


## ① Yacht Club Harbour in Smiltynė

Vacancies: 15  
Contacts: tel. +370 46 391131, fax +370 46 391107;  
Prices: 4.0 Lt/m/day, extra 6 Lt/person/day (water, WC, shower included).  
Services: crane for masts, sail repair  
Advantages: beach (1.5 km away), sea museum (2 km)  
Transport: ferry to town, bus to Nida (51 km)  
Harbour gates: depth 4.0 m  
Geographic coordinates:  
55° 41.016' N  
21° 07.270' E  
S-5; A-4; T-3; D-3

## ② Old Castle Harbour

Prices: 5.0 Lt/m/day (electricity, water included)  
Services: yacht yard, ship hoist  
Advantages: town centre  
Harbour gates: depth 3.5 m  
Geographic coordinates:  
55° 42.414' N  
21° 07.605' E  
S-5; A-4; T-3; D-3; C-600 m; I-500 m



# NERINGA

The town covers the whole Lithuanian (northern) part of the Curonian Spit. The central street of the town is a 50-kilometre-long road along which one will find the tiny settlements of Alksnynė, Juodkrantė, Pervalka, Preila and the slightly larger Nida. Neringa is known as a paradise for vacationers and a place where many different art and cultural events are arranged. In 2001 Neringa was included into the list of UNESCO World Heritage Sites. During the summer this resort is full of attractions.

**Nida TIC**  
Taikos 4, LT-5872 Nida  
Tel. +370 469 52345, fax +370 469 52538, aglainfo@is.lt  
http://www.neringainfo.lt/eng/turizm.htm

**Kuršių Nerija National Park** covers an area of 27,000 hectares and stretches 52 km. It is a narrow peninsula separating the Kuršių Marios (Curonian Lagoon) from the Baltic Sea. Since 2000 Kuršių Nerija (Curonian Spit) together with a part of the Kaliningrad region has been included in the UNESCO World Heritage list. The sea winds shift the sand, creating a range of large sand dunes.

Until the 15th century the spit was covered by both deciduous and coniferous forests. Later, large trees were cut down. This led to severe sand shifting. The moving sands swallowed up 14 villages. It was in 1825 that G.D. Kuvertas started the first reforestation project to stop the shifting sands. The largest of the dunes are Sklandytojų, the Angliai Hill, Parnidis Dune and the Urbas Hill up to 100 metres high.

**Kuršių Nerija NP TIC**  
Smiltynės 11, LT-5800 Klaipėda  
Tel. +370 46 40 22 56, fax +370 46 40 22 57  
kinfo@takas.lt, www.nerija.lt/en

## PLACES OF INTEREST

**Parnidis Dune**, the highest hill in Neringa (52 m).  
**Urbas Hill** featuring a splendid lighthouse on it.  
**Nida Church**, a charming red brick Lutheran and Catholic Neo-Gothic style church used for both religious services and classical music concerts.  
**Ethnographic Cemetery** famed for its collection of ancient wooden grave markings, called *krikštai*.  
**G.D. Kuwert Monument** is built for a man famed for 'greening' Neringa, and thus saving the drifting dunes from destruction.

**Juodkrantė Church** is Neo-Gothic in style used as a museum. Classical music concerts and church services are also held there.  
**Stone Sculpture Park** on Juodkrantė pier, the result of an international sculpture symposium.  
**Sightseeing Site** on top of Avinas Hill near Juodkrantė affords a beautiful view of the lagoon and the Baltic Sea.  
**Witches Hill (Raganų Kalnas)** a path of wooden sculptures in a picturesque forest in Juodkrantė.  
**Nature Path** in Nagliai Reserve, with a breathtaking landscape not far from Pervalka.  
**Zirgų Lighthouse** in Pervalka, built in 1900.

## MUSEUMS

**Neringa Historical Museum**  
Naglių 4, Nida, tel. +370 469 52 372, neringosmuz@is.lt  
**The Curonian Spit Residents Business Exposition**  
Pamario 53, Nida, tel. +370 469 51162  
**The House of Thomas Mann**  
Skruzdynės 17, Nida, tel. +370 469 52 260  
man@nida.omninet.net  
**Exhibition Hall of the Lithuanian Art Museum**  
L. Rėzos 3a, Juodkrantė, tel. +370 469 53323



Šilutė is located 45 km south-east of Klaipėda. Until 1923 it was under German rule and was called Heydekrug. Šilutė was formed from three villages located halfway between Klaipėda and Tilžė (Tilsit). In the 16th century, tradesmen settled in the area. Local markets drew merchants from Klaipėda, Tilžė and neighbouring Königsberg (nowdays Kaliningrad). When the Klaipėda railway was completed in 1875, its trade with German cities expanded considerably. After centuries of German rule, Šilutė was rejoined to Lithuania in 1923. Two Lutheran Evangelical churches and one Catholic Church respectively served religious needs. Rusnė is a settlement of fishermen at the delta of the River Nemunas located 10 km from Šilutė. Visitors' attention is invariably caught by the characteristic maritime architecture. The nearby village of Mingė, on the banks of the River Minija, may truly be called the Lithuanian Venice as there are no streets there at all.

**Šilutė TIC**  
Lietuvinių 10/2, Šilutė  
Tel. +370 441 77 795, fax +370 441 77 785  
info@siluteinfo.lt

## PLACES TO VISIT

**Šilutė Museum**  
Lietuvinių 36, Šilutė  
Tel./fax +370 441 62 209  
muziejus@silute.omninet.net, www.pamarys.lt/kultura/muziejus/muzpagr.htm  
**Nemuno Delta Regional Park**  
Information Centre, Pakalnės 40a, Rusnė, Šilutė district  
Tel. +370 441 62 209, ndr@silute.omninet.net  
In 1993 the park was recognised as an important area for migratory waterfowl. The Arctic-European-East African bird migration flightway goes through the park. The delta is an outstanding area for bird watching.  
**Ventės Ragas Ornithological Station**  
Kintai vill., Šilutė reg. 66 km on South of Klaipėda  
Tel. +370 441 44 516  
About one million birds pass over the station every spring on one of the major north-south migration routes. Call in advance for a guide who will show you the exhibition of stuffed specimens and migration patterns and, if there's one in the net, even let you ring a bird. For more bird watching trips, contact the Lithuanian Ornithological Society at www.birdlife.lt

# ŠILUTĖ

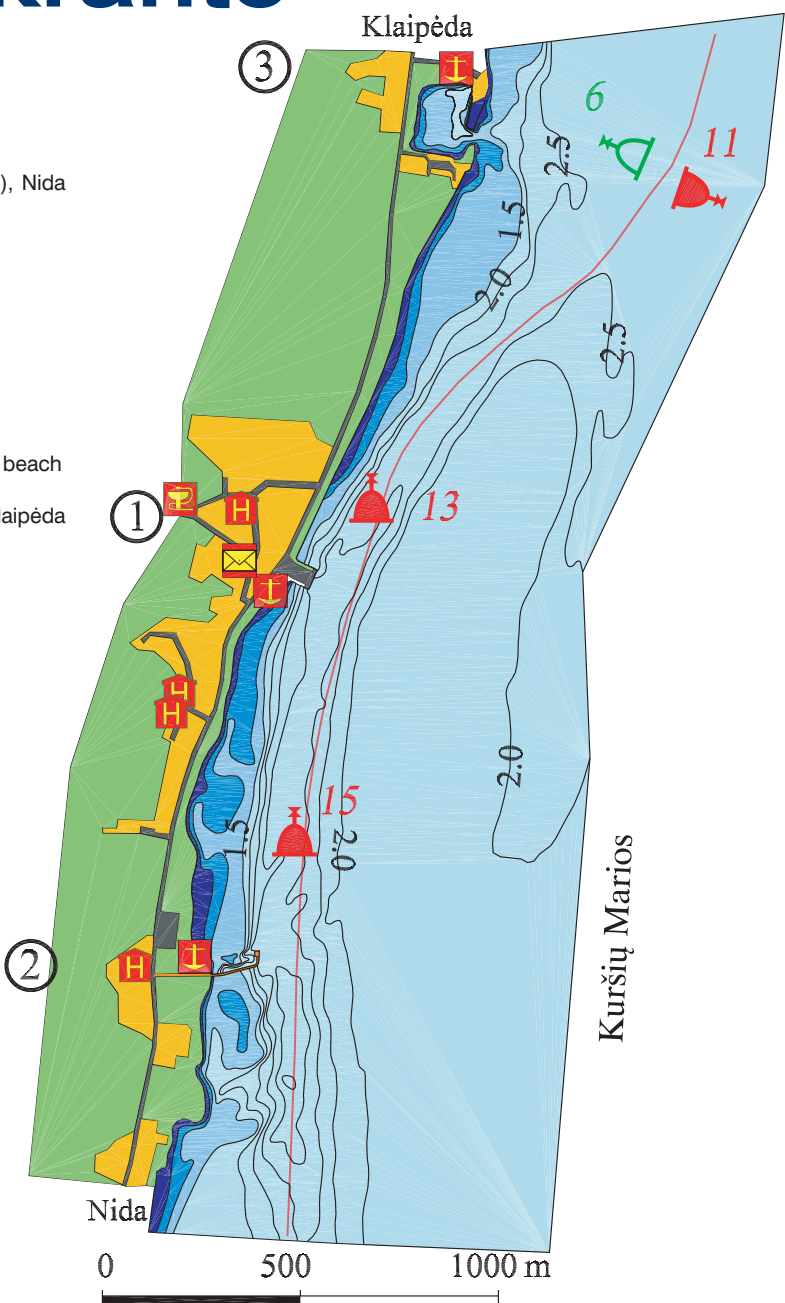
**Macikai Concentration Camp Museum**  
Macikai village, Šilutė district, tel. +370 441 62 209  
A Nazi concentration camp between 1939 and 1944, this small museum is situated in what was the punishment ward.  
**Rusnė Ethnographical homestead**  
Skirnytėlės 8, Rusnė, Šilutė district, tel. +370 441 58 169  
A brief and fascinating look into local folk history and customs. Open May 15 - September 15.  
**Hermans Zudermann Museum**  
Macikai village, Šilutė district, tel. +370 441 62 209  
**Švėkšna Museum**  
Švėkšna, Šilutė district, tel. +370 441 62 209  
**Vydūnas Cultural Centre**  
Kintai, Šilutė district, tel. +370 441 47 379, vydunas@deff.lt  
Museum of the Lithuanian philosopher Vydūnas, complete with an art gallery and cultural centre.

## 3 Juodkrantė

**1. QUAY**  
Vacancies: 8 (anchors)  
Services: (WC, showers in cafe)  
Advantages: forest, beach (2 km)  
Transport: buses to Klaipėda (18 km), Nida (32 km)  
Depth 3.0 m  
Geographic coordinates:  
55° 32.511' N  
21° 07.381' E  
S-3; A-5; T-5; D-0; C-100 m  
I-1.1 km; Boat davit (1.1 km)

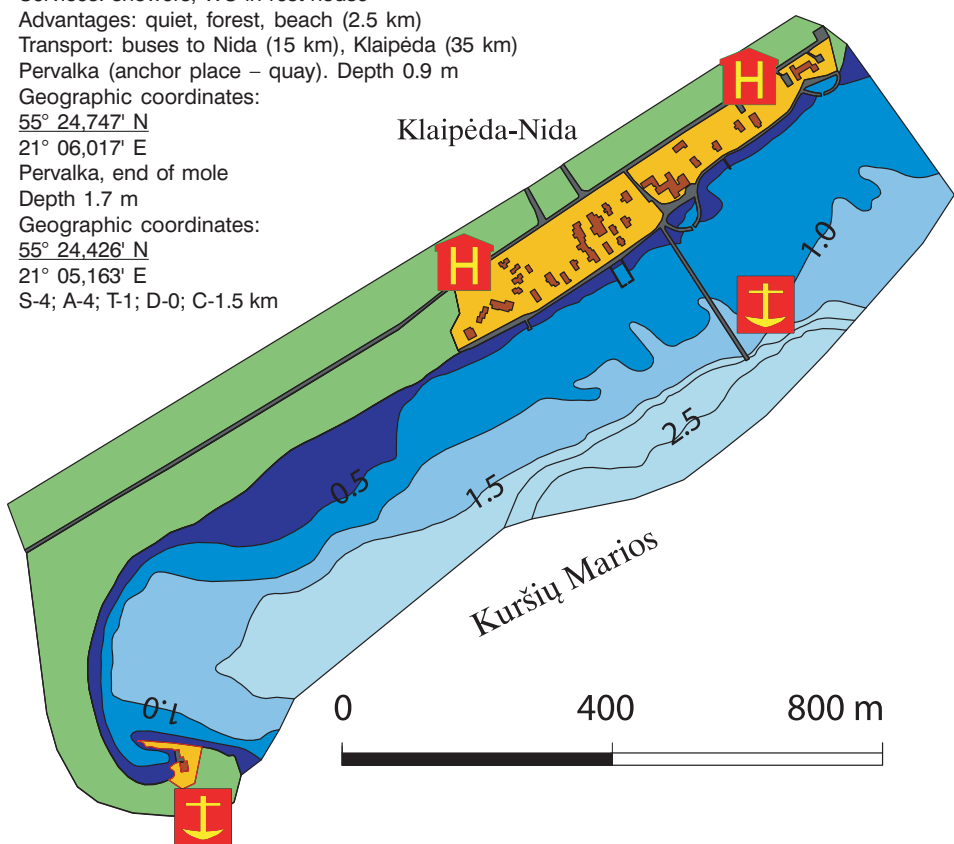
**2. AŽUOLYNAS**  
Vacancies: 15  
Advantages: hotel, restaurant, bars, beach (1.5 km), quiet  
Transport: buses to Nida (30 km), Klaipėda (20 km)  
Depth at the quay is 3.0 m  
Geographic coordinates:  
55° 31.995' N  
21° 07.288' E  
S-4; A-5; T-5; D-5; C-1000 m

**3. GINTARAS BAY**  
Vacancies: 10 (anchors)  
Advantages: forest, beach  
Transport: buses to Klaipėda (18 km), Nida (32 km)  
Entrance to Gintaras Bay:  
depth 1.2  
Geographic coordinates:  
55° 33.122' N  
21° 07.722' E  
S-5; A-3; T-3; D-4; C-1.0 km  
I-2.4 km.; boat davit (1.4 km)



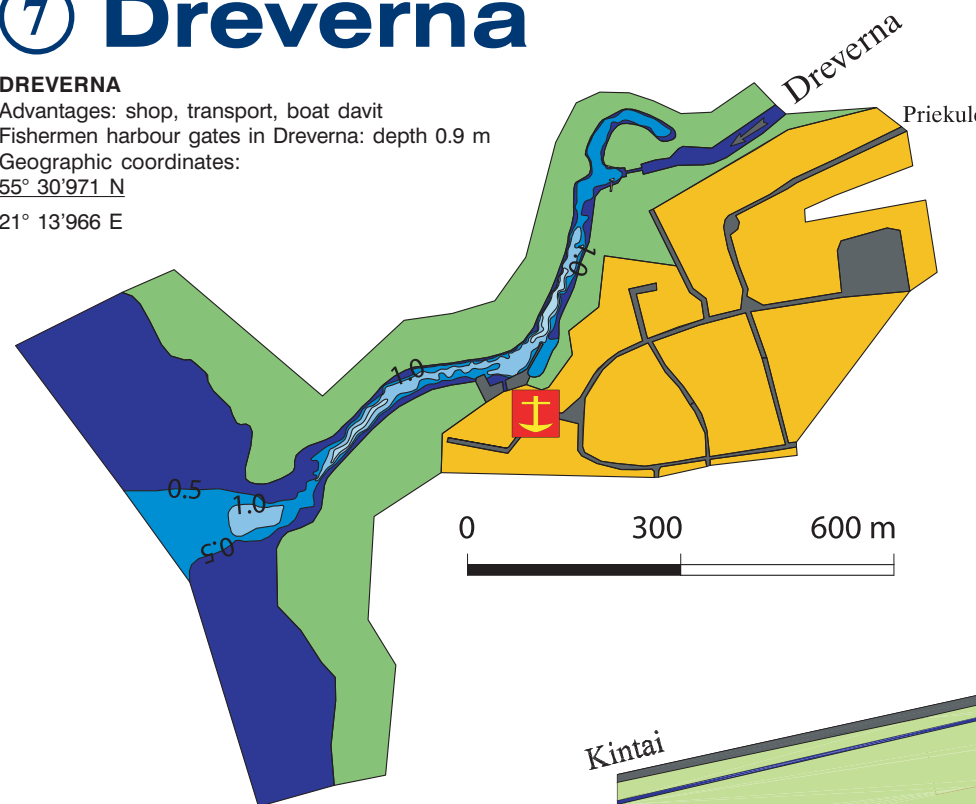
## 4 Pervalka

Vacancies: 2  
Services: showers, WC in rest-house  
Advantages: quiet, forest, beach (2.5 km)  
Transport: buses to Nida (15 km), Klaipėda (35 km)  
Pervalka (anchor place – quay). Depth 0.9 m  
Geographic coordinates:  
55° 24.747' N  
21° 06.017' E  
Pervalka, end of mole  
Depth 1.7 m  
Geographic coordinates:  
55° 24.426' N  
21° 05.163' E  
S-4; A-4; T-1; D-0; C-1.5 km



## 7 Dreverna

**DREVERNA**  
Advantages: shop, transport, boat davit  
Fishermen harbour gates in Dreverna: depth 0.9 m  
Geographic coordinates:  
55° 30.971' N  
21° 13.966' E



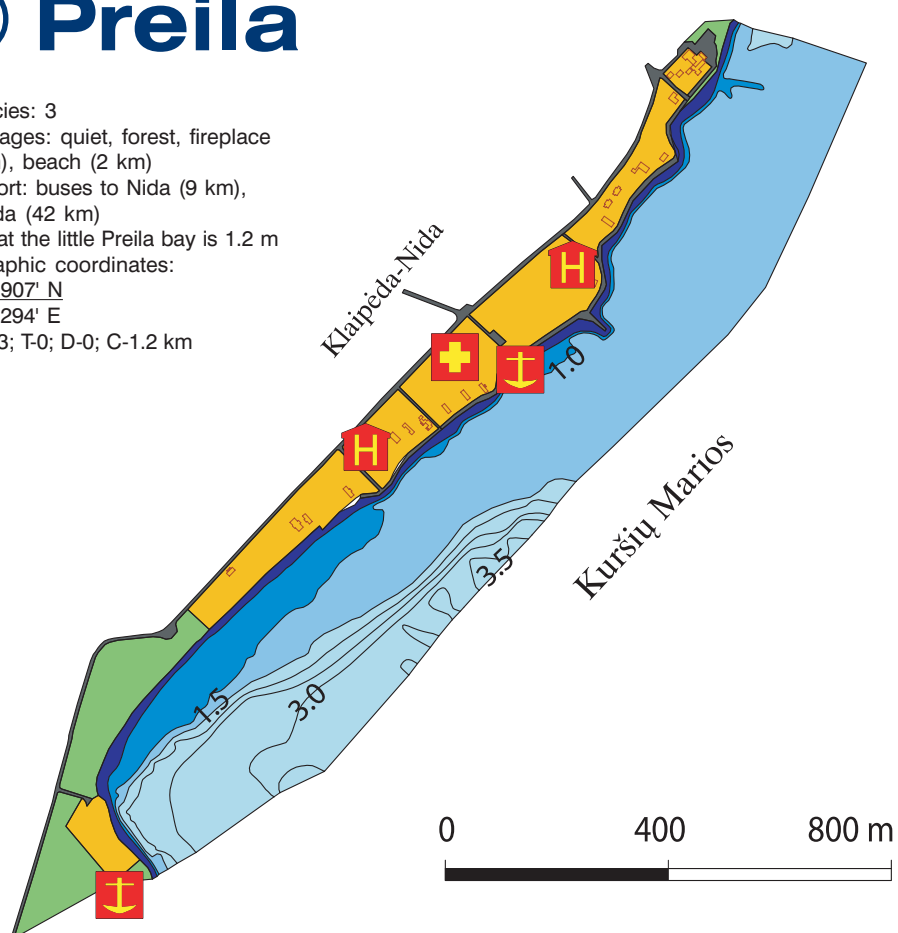
## 9 Šilutė

Vacancies: 15  
Contacts: tel. +370 441 51666, +370 688 70146  
Services: WC, water, electricity, boat davit.  
Advantages: town centre, cafe, hotel, shop, transport  
Harbour depth 1.6 m, electricity line before harbour gates (height 9 m), depth of the River Šyša is 1.5 m. Geographic coordinates:  
55° 20.389' N  
21° 26.936' E  
S-4; A-4; T-1; D-0; C-0.5 km



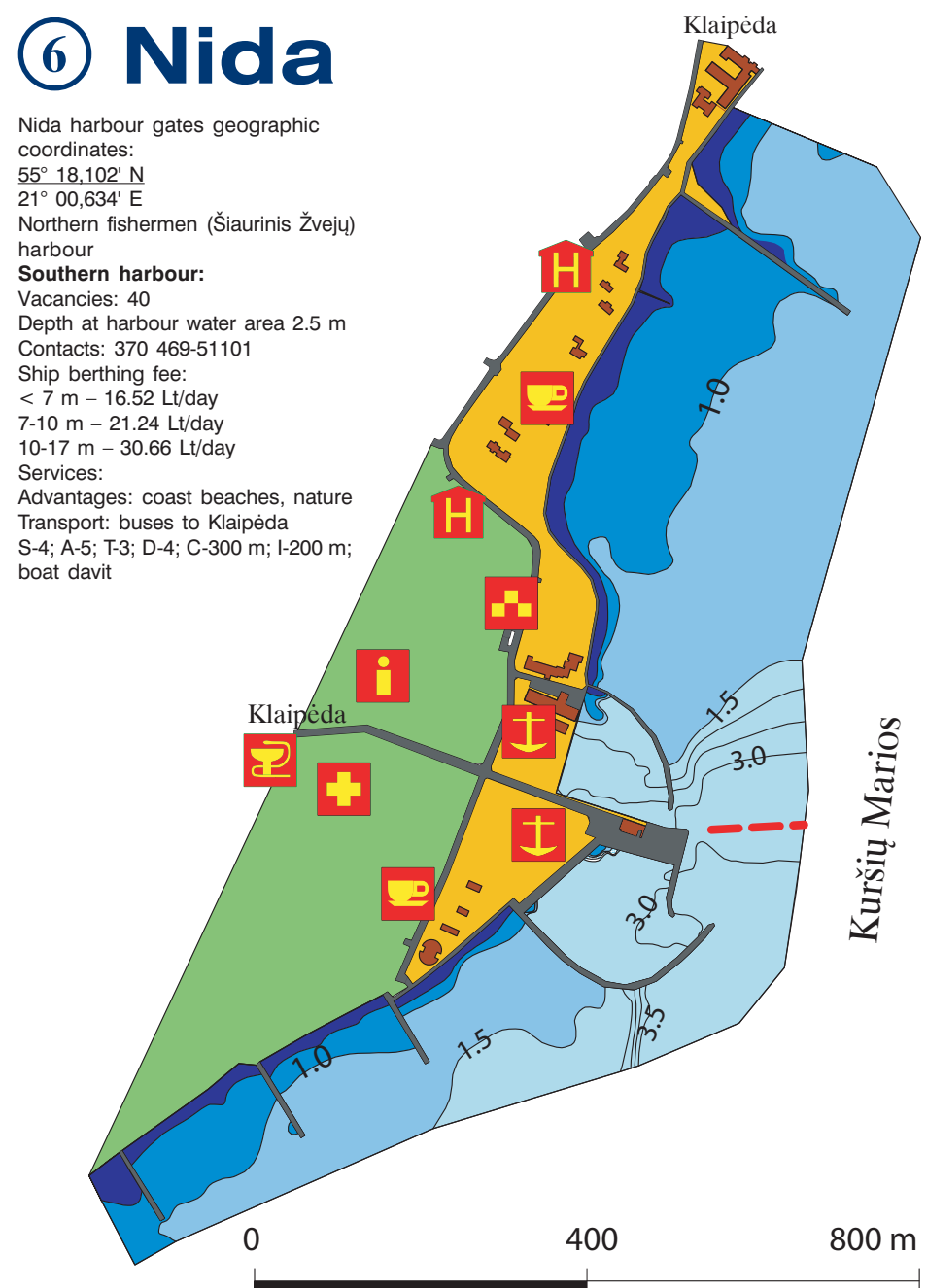
## 5 Preila

Vacancies: 3  
Advantages: quiet, forest, fireplace (900 m), beach (2 km)  
Transport: buses to Nida (9 km), Klaipėda (42 km)  
Depth at the little Preila bay is 1.2 m  
Geographic coordinates:  
55° 21.907' N  
21° 03.294' E  
S-4; A-3; T-0; D-0; C-1.2 km



## 6 Nida

Nida harbour gates geographic coordinates:  
55° 18.102' N  
21° 00.634' E  
Northern fishermen (Šiaurinis Žvejų) harbour  
**Southern harbour:**  
Vacancies: 40  
Depth at harbour water area 2.5 m  
Contacts: 370 469-51101  
Ship berthing fee:  
< 7 m – 16.52 Lt/day  
7-10 m – 21.24 Lt/day  
10-17 m – 30.66 Lt/day  
Services:  
Advantages: coast beaches, nature  
Transport: buses to Klaipėda  
S-4; A-5; T-3; D-4; C-300 m; I-200 m; boat davit



## 8 Uostadvaris, Minija

**Uostadvaris:**  
Vacancies: 10  
Contacts: +370 441 58151  
Advantages: pristine nature of the delta, historical pump-house, lighthouse  
Harbour depth 1.7 m  
Geographic coordinates:  
55° 20.60' N  
21° 17.60' E  
S-5; A-4; T-1; D-3  
**Minija village:**  
Main street of the villages is the river.  
Advantages: shop, nature of the delta, quiet.  
Depth of the River Minija is 2.5 m  
Geographic coordinates:  
55° 21.52' N  
21° 16.88' E



	Tourist Information Centre	<b>S</b> – Safety
	Outpatient clinic	<b>A</b> – Environment
	Restaurant, cafe	<b>T</b> – WC
	Hotel	<b>D</b> – Shower
	Pharmacies	<b>C</b> – Centre of the town
	Harbour	<b>I</b> – Tourist Information Centre
	Taxi	<b>0, 1, 2, 3, 4, 5</b> – Quality
	Customs	